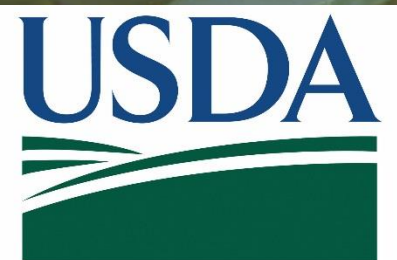


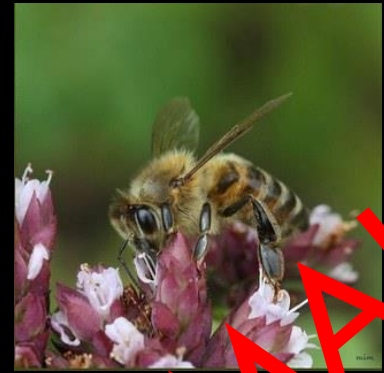
NRCS FINANCIAL AND TECHNICAL ASSISTANCE OPPORTUNITIES

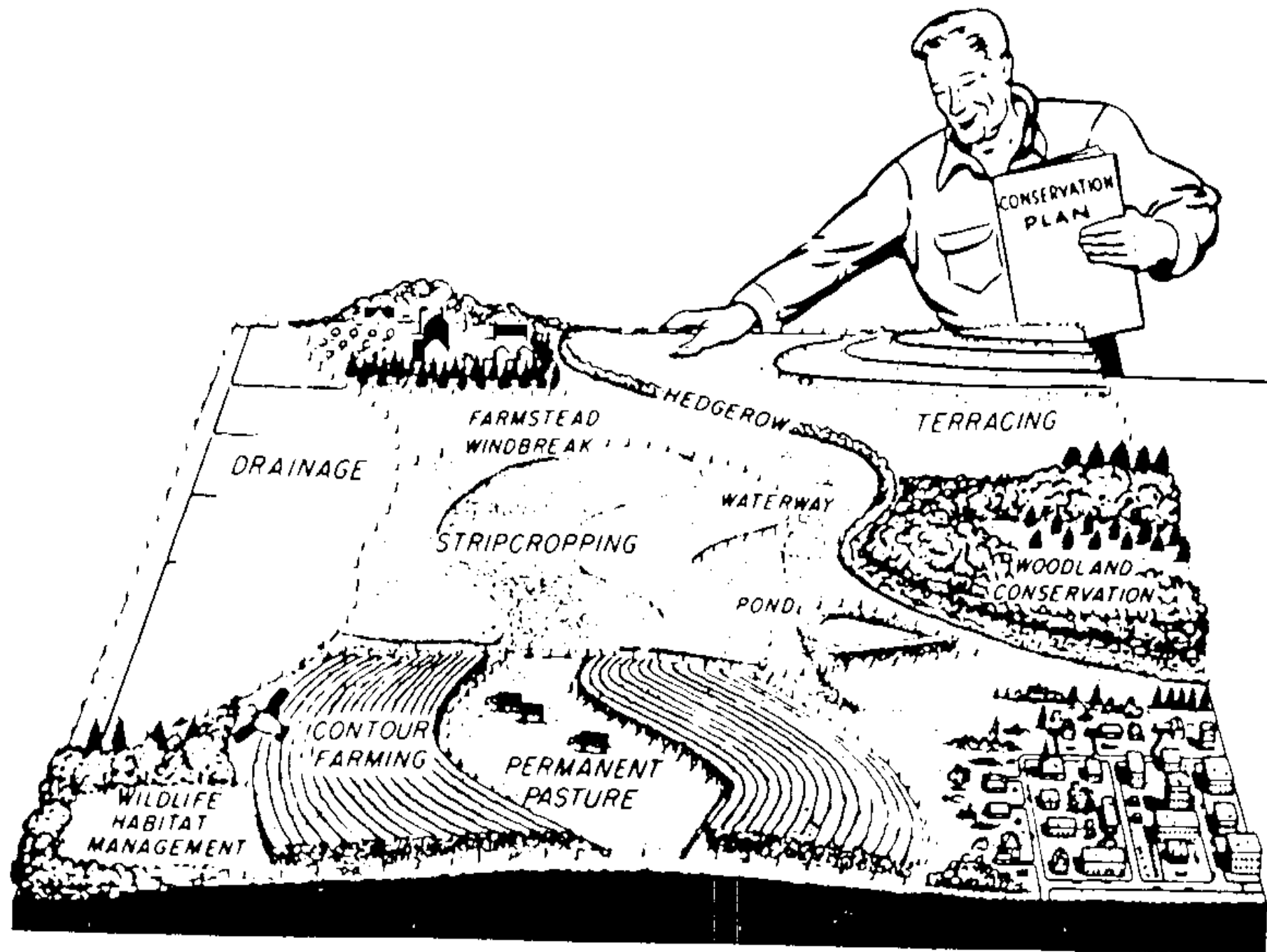
LAUREN CARTWRIGHT
AGROFORESTRY ACADEMY
JULY 22, 2015



Who we are and where to get more information







Technical Assistance Opportunities



Financial Assistance Opportunities



Technical Assistance Opportunities



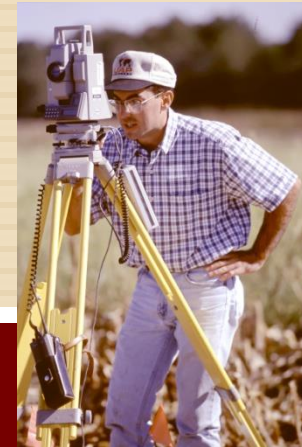
Assess Resources



Monitor Resources



Develop Conservation Plan



Design Practices

Financial Assistance Opportunities

The logo for the Environmental Quality Incentives Program (EQIP) features the letters "EQIP" in a bold, blue, three-dimensional font. The letters are slightly shadowed, giving them a sense of depth. Below the letters, there is a faint, light blue reflection of the text on a glossy surface.

Environmental
Quality Incentives
Program

The logo for the Conservation Stewardship Program (CSP) features the letters "CSP" in a bold, blue, three-dimensional font. Similar to the EQIP logo, the letters have a slight shadow and a faint reflection below them.

Conservation
Stewardship
Program

This is just an example of the most prevalent financial assistance programs and initiatives available nationally through NRCS. Depending on your location there may be other regional or state initiatives.

EQIP Payment Rates

Tree/Shrub Site Preparation: \$ 32.60/ac

Tree/Shrub Establishment (Elderberry shrubs): \$0.51/each

Mulching: \$266.20/ac (natural material) \$1,059.80/ac
(synthetic material)

Conservation Cover: \$341.10/ac - \$428.90/ac

The rates provided are what was offered in Fiscal Year 15. These rates are not static. They are re-assessed each year.



**WHERE DO I GET MORE
INFORMATION?**

www.nrcs.usda.gov
www.mo.nrcs.usda.gov

USDA Natural Resources Conservation Service
United States Department of Agriculture

About NRCS | Careers | National Centers | State Offices

Topics | Programs | Newsroom | **Contact Us**

Browse By Audience | A-Z Index | Advanced Search | Help

Ohio farmer strives to improve water quality
The National Water Quality Initiative helps address nutrient management and water quality concerns.

Office of the Chief Directory
Regional Conservationists
Associate Chief for Operations
Associate Chief for Conservation
National Centers Directory
State Offices Directory
Plant Materials Centers Directory
MLRA Soil Survey Regional Offices Directory
Technical & Program Specialists Directory
Local Service Centers Directory
Special Emphasis Programs Directory
Media Contacts Directory
FOIA Directory
Feedback Forms

Popular Topics

- > Financial Assistance
- > Technical Assistance
- > Field Office Technical Guide
- > Soils
- > Plants & Animals

Sign up for email updates: **Go**

In the News | **Events & Deadlines**

- USDA, partners usher in a new era in conservation
- USDA provides assistance to agricultural producers to improve water quality

Top Views This Week

- Conservation Innovation Grants
- NRCS Funding Opportunities
- Soil Surveys by State
- Soil Survey
- NRCS Publications
- NRCS Conservation Practices

Get Started with NRCS

2014



USDA United States Department of Agriculture
Service Center Locator

Text Version Home State Map USDA FSA NRCS RD Complete Office Listing

Serving COLE County, Missouri

Service Centers In Your County

JEFFERSON CITY SERVICE CENTER

1911 BOGG'S CREEK RD
JEFFERSON CITY, MO 65101
(573) 893-5196
(573) 893-7238 fax

- [Street Map](#)
- [Driving Directions](#)
- ✉ [Mailing Address](#)

Farm Service Agency
Natural Resources Conservation Service
Rural Development
Conservation District

Please forward office updates and corrections to: [✉ OIP National Data Steward](#)

[Accessibility Statement](#) | [Privacy Policy](#) | [Non-Discrimination Statement](#)

Follow NRCS Missouri

Website: www.mo.nrcs.usda.gov



Twitter: NRCS_Missouri



YouTube: NRCSMissouri



GovDelivery: Text NRCS MOEvents to 468311
or enroll through Missouri NRCS website



USDA is an equal opportunity
provider and employer.