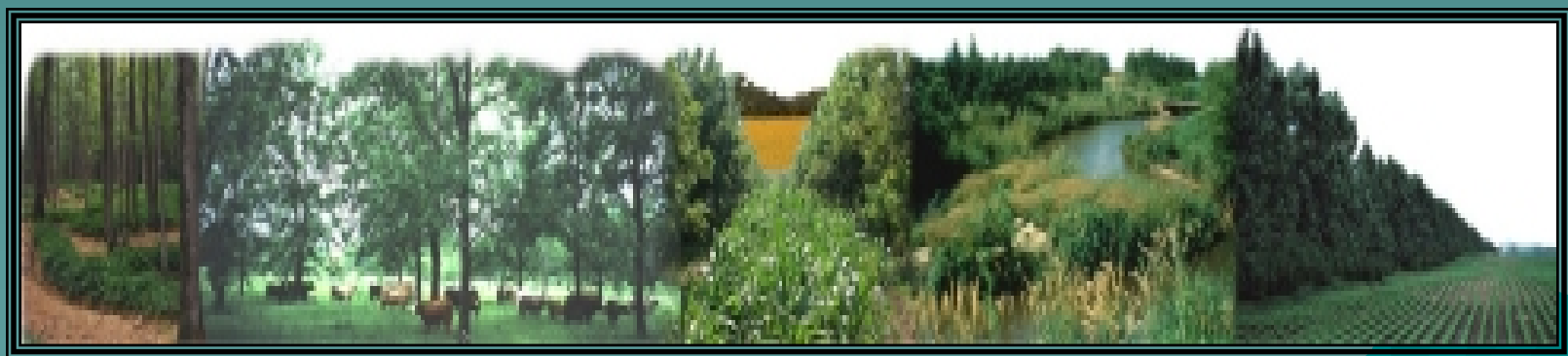


11th North American Agroforestry Conference

**May 31 – June 3, 2009
Columbia, Missouri**

**The conference hosts are the
MU Center for Agroforestry and the Association for
Temperate Agroforestry**



Traveling to Columbia



- ◆ Located half way between the St. Louis International Airport (100 miles) and the Kansas City International Airport (150 miles)
- ◆ Located 10 miles from the Columbia Regional Airport
- ◆ Door-to-door St. Louis and Kansas City Airport transportation available for a fee with MO-X shuttle
- ◆ Free shuttle service for the Columbia Regional Airport provided by the Stoney Creek Inn

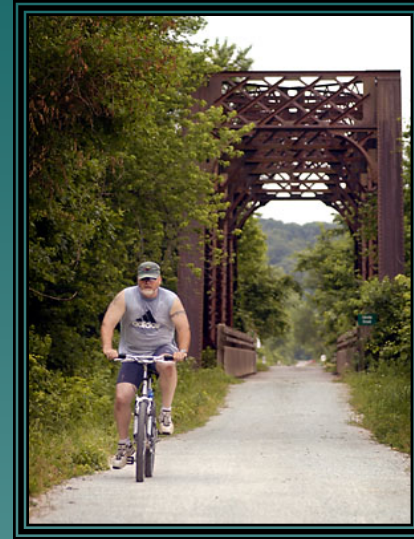
Welcome to Columbia!

Home of the University of Missouri



A Few Things to Do While in Columbia

- ◆ Bike or walk the KATY Trail
- ◆ Visit the MU Campus or the Shelter Insurance Gardens
- ◆ Hike and view caves at Rock Bridge State Park
- ◆ Visit the Les Bourgeois Winery or the Flat Branch Pub & Brewery
- ◆ Shopping and dining in *The District* in downtown area
- ◆ Visit the Columbia Mall



The conference lodging, meeting rooms and most meals will be at the Stoney Creek Inn



Lodging fee will be \$72 per night for up to 4 people per room and includes a complimentary continental breakfast

The Stoney Creek Inn (clockwise):

Spacious banquet room
Northwoods décor lobby
Indoor / outdoor pool
Antler's lounge



2009 Conference Preliminary Schedule



Pitch x Loblolly Pine test plots at the HARC

- ◆ **Saturday:** Optional pre-conference tour of agroforestry demonstrations
- ◆ **Sunday:** Registration, evening welcome reception, membership meeting and AFTA board meeting
- ◆ **Monday:** Plenary session, concurrent sessions, exhibits, silent auction, poster session, luncheon, banquet, and landowner show and tell sessions
- ◆ **Tuesday:** Motor coach tour of the MU Horticulture and Agroforestry Research Center and Shepherd Farms, followed by a BBQ dinner
- ◆ **Wednesday:** Concurrent sessions, luncheon, optional post-conference tour of agroforestry demonstrations
- ◆ **Thursday:** Optional post-conference tour of agroforestry demonstrations

**Educational exhibit tables will be available for
\$200 fee per table**



A 4 ft. square cork board and easel will be provided for the poster session held on Monday afternoon



Tuesday tour of the MU Horticulture and Agroforestry Research Center (HARC)



A few of the research projects we will see at the HARC (clockwise):

chestnut orchard

flood lab

bioterrace

shade house structure



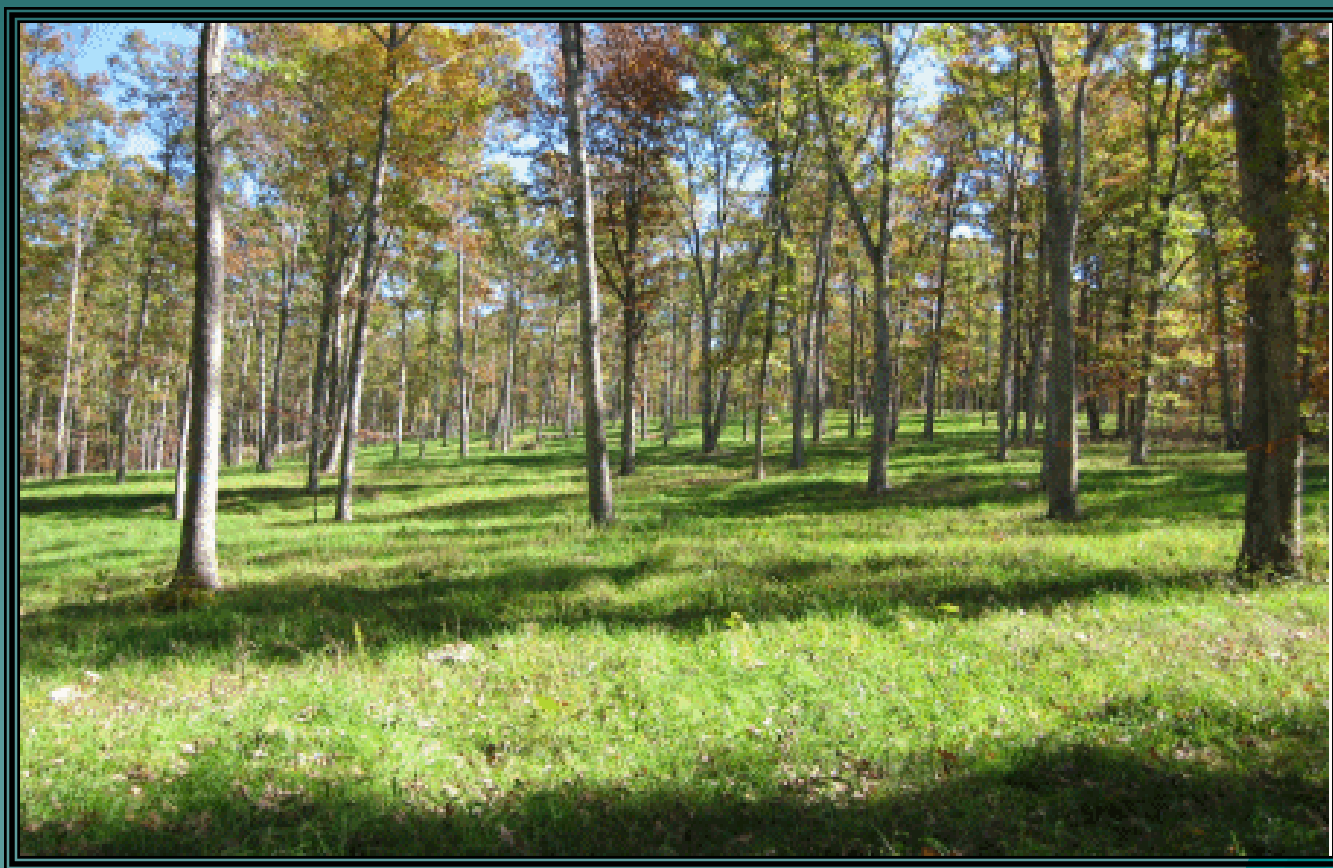
We will also visit Shepherd Farms on Tues. (clockwise):
pecan processing plant
on-farm store
pecan orchard and alley cropping demonstration
viewing the buffalo herd



**Optional post-conference tour on Wednesday
afternoon to the MU Greenley Research Center**



Optional post-conference tour on Thursday to the silvopasture demonstration area at the MU Wurdack Farm



Optional post-conference tour on Thursday will also include the Ozark Forest Mushrooms facility



Timeline for Abstracts, etc.

- ◆ Call for papers:
March 1, 2008
- ◆ Registration: starting
November 1, 2008
- ◆ Deadline for abstracts:
December 1, 2008
- ◆ Abstract acceptance
notification:
by February 1, 2009
- ◆ Papers due for
Proceedings: March 1,
2009
- ◆ Speaker schedule on-
line: by April 1, 2009
- ◆ Proceedings on CD
handed out at the
conference



The KATY Trail

Conference Registration Fees

Information updated on 11-18-08

3-day full conference registration fees for AFTA members:

- ◆ \$ 299 Early (USD)
- ◆ \$ 314 Regular
- ◆ \$ 329 Late

3-day full conference registration fees for student AFTA members (with ID):

- ◆ \$ 199 Early
- ◆ \$ 215 Regular
- ◆ \$ 229 Late

Optional pre- and post-conference field trips (includes transportation and meals):

- ◆ \$ 75 Saturday p.m. tour
- ◆ \$ 75 Wednesday p.m. tour
- ◆ \$ 100 Thursday all day tour

1-day and spouse fee rates are available



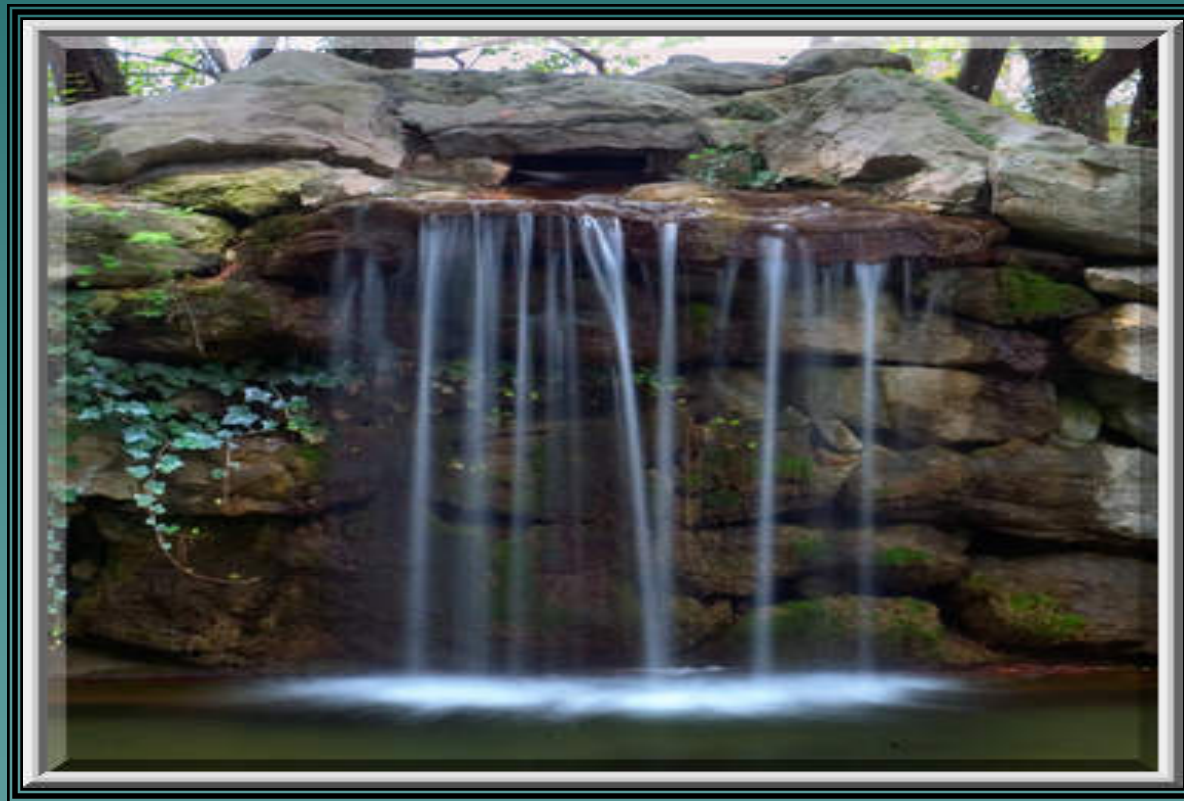
Rock Bridge State Park

Questions?



- ◆ Contact person:
Ms. Julie Rhoads
Technology Transfer
Events Coordinator
- ◆ Email:
RhoadsJ@missouri.edu
- ◆ Phone: 573-882-3234
Fax: 573-884-0495
- ◆ Address:
MU Center for Agroforestry
203 ABNR Building
Columbia, MO 65211 USA

See you in Columbia in 2009!



Shelter Insurance Gardens